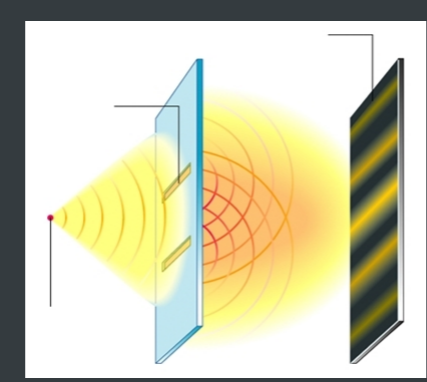


interfrange<sup>1</sup>  
contraste

interférences constructives / destructives

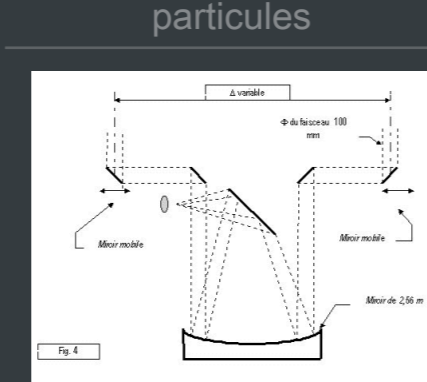
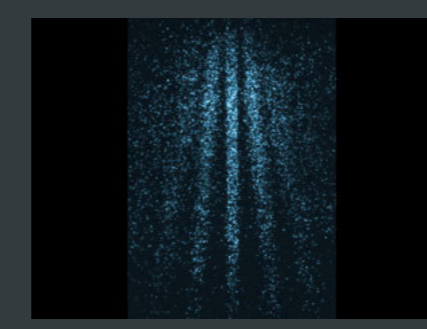
Comportement ondulatoire



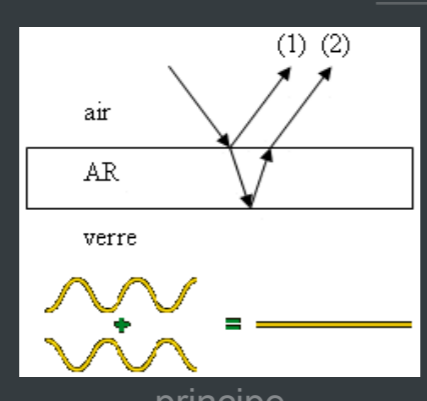
casque antibruit

ondes acoustiques

possibilité de désaccorder les pulsations



interférométrie stellaire



principe



observation

Applications

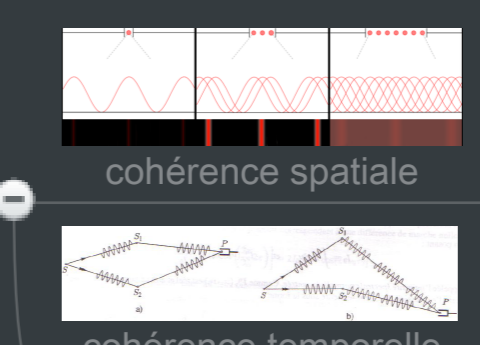
# Interférences

Optique

conditions d'interférence

cohérence spatiale

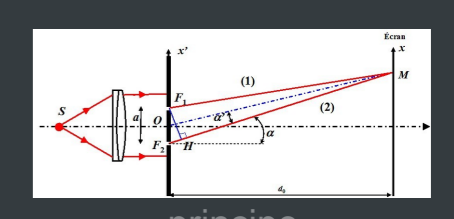
cohérence temporelle



à deux ondes

division par front d'onde

fentes / trous d'Young

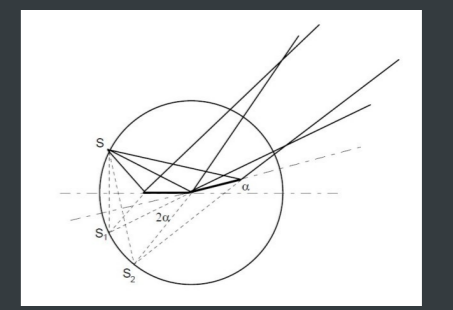


principe

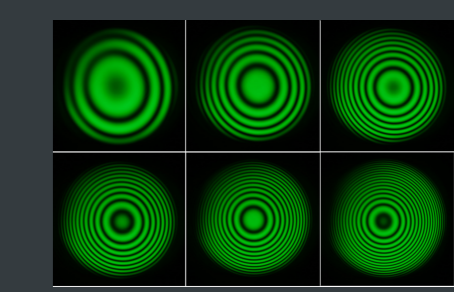


observation

miroirs de Fresnel

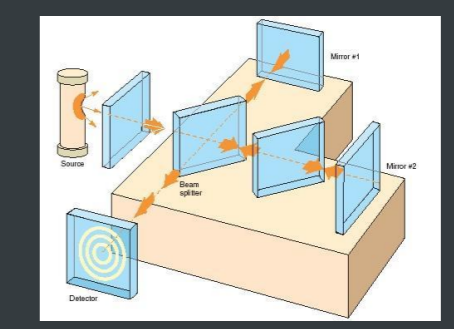


principe



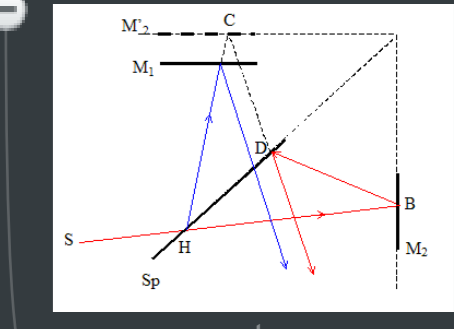
observation

division d'amplitude

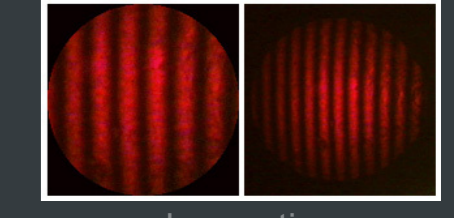


interféromètre de Michelson

lame d'air

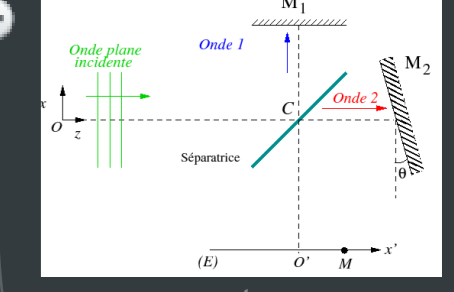


montage



observation

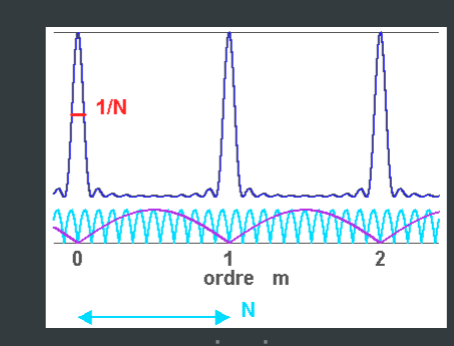
coin d'air



montage

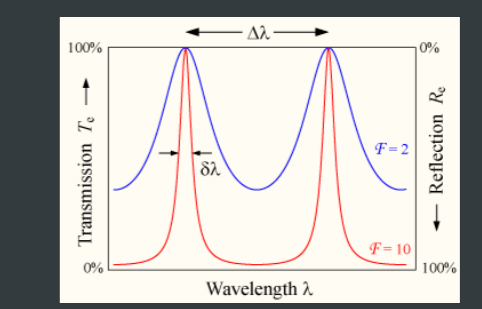
à plusieurs ondes

réseaux



principe

interféromètre de Fabry-Pérot



principe

# Notes

## 1) interfrange

$$i = (\lambda D) / b$$